



**CAUTION**  
KEEP OUT OF REACH OF CHILDREN  
READ SAFETY DIRECTIONS  
FOR ANIMAL TREATMENT ONLY

**HeartGard<sup>30</sup> PLUS**  
(ivermectin/pyrantel) Chewables

Each Chewable contains 68 µg IVERMECTIN and 57 mg PYRANTEL (as embonate salt). For DOGS UP TO 11kg.

Each Chewable contains 136 µg IVERMECTIN and 114 mg PYRANTEL (as embonate salt). For DOGS 12-22kg.

Each Chewable contains 272 µg IVERMECTIN and 227 mg PYRANTEL (as embonate salt). For DOGS 23-45kg.

- Heartworm prevention
- Controls roundworms and hookworms
- Monthly dose
- Real beef chewable for dogs

#### INDICATIONS

For use in dogs where both heartworm prevention and monthly treatment for control of roundworms and hookworms is necessary.

HEARTGARD-30 Plus prevents heartworm disease in dogs by eliminating heartworm larvae (*Dirofilaria immitis*) that infected the dog in the month (30 days) before treatment. HEARTGARD-30 Plus also controls heartworm infections acquired in the previous 4 months provided monthly treatment is continued for at least 12 months.

For the treatment and control of roundworms (*Toxocara canis* and *Toxascaris leonina*) and hookworms (*Ancylostoma caninum*, *A. braziliense*, *A. ceylanicum* and *Uncinaria stenocephala*).

Your veterinarian can advise if there is a need for monthly treatment of roundworms and hookworms with HEARTGARD-30 Plus in pups and adult dogs.

#### DIRECTIONS FOR USE

##### Precautions

As macrocyclic lactones may have some effects against adult heartworms, veterinarians are advised to be cautious when treating active or working dogs with a diagnosed heartworm infection.

##### Dosage and Administration

Can be used in puppies from 6 weeks of age. Give one HEARTGARD-30 Plus Chewable orally at monthly intervals according to the recommended dosage schedule below. The dog should be closely observed for several minutes following administration to make sure that the entire dose has been consumed. If it is suspected that any of the dose has been lost, re-dosing is recommended. The chewable should be administered in a manner that encourages the dog to chew rather than swallow without chewing. Chewables may be broken into pieces and fed to dogs that normally swallow treats whole. The recommended dosage schedule for prevention of canine heartworm disease is as follows:

Dog Weight	Chewables Per Month	Colour Coding on Carton
Up to 11 kg	1	Blue
12 to 22 kg	1	Green
23 to 45 kg	1	Brown

Give dogs over 45 kg the appropriate combination of these Chewables.

#### The monthly preventive program with HEARTGARD-30 PLUS

Give your dog HEARTGARD-30 Plus on or about the same date each month during the period of the year when mosquitoes are active. The convenience of a monthly dose is possible because HEARTGARD-30 Plus kills heartworm larvae which have been acquired within the month prior to treatment. You should administer the first dose within one month (30 days) of your dog's initial exposure to mosquitoes.

HEARTGARD-30 Plus also controls heartworm infections acquired in the previous 4 months provided monthly treatment is continued for at least 12 months.

When replacing another heartworm preventive product in a heartworm disease preventive program, the first dose of HEARTGARD-30 Plus should be given within a month (30 days) of the last dose of the former medication.

For optimal performance, HEARTGARD-30 Plus must be given once a month on or about the same date. If treatment is delayed, whether by a few days or many, immediate treatment with HEARTGARD-30 Plus and resumption of the recommended dosing program will minimise the opportunity for the development of adult heartworms. Monthly treatment with HEARTGARD-30 Plus also provides effective treatment and control of roundworms (*T. canis* and *T. leonina*) and hookworms (*A. caninum*, *A. braziliense*, *A. ceylanicum* and *U. stenocephala*).

Consult your veterinarian about treatments for internal parasites in young pups in the period up to six weeks of age.

#### Administration

Remove only one chewable at a time from the foil-backed blister card. Return the card with remaining chewables to the package to protect the product from light.

Because most dogs find the product highly palatable, they will accept and consume HEARTGARD-30 Plus when offered by hand. If more convenient, the chewable can be added to a small amount of dog food.

#### GENERAL DIRECTIONS

##### SAFETY TO DOGS

When used as directed, HEARTGARD-30 Plus Chewables have a wide margin of safety in all breeds of dogs, including stud dogs, breeding bitches and puppies 6 weeks of age and older. HEARTGARD-30 Plus may be administered to dogs of negative,

positive or unknown heartworm status. Heartworms can have serious effects on the health of dogs. Dogs should be tested by a veterinarian before heartworm prevention is initiated. Dogs with evidence of an existing heartworm infection should only be treated under the supervision of a veterinarian.

#### INTRODUCTION

Preventing heartworm disease and controlling internal parasites are critical to good canine health. Please read this leaflet. It tells you how to safely use HEARTGARD-30 Plus to provide optimum protection for your dog.

Additionally, to help you follow the monthly dosing schedule, we have designed an easy reminder system which appears at the end of this leaflet. If you have any questions about heartworm disease or this medication, you should consult your veterinarian.

Pyrantel is added to the ivermectin to control roundworms and hookworms. Your veterinarian will advise if there is a need for monthly treatment for roundworms (ascarids) and hookworms with HEARTGARD-30 Plus in pups and adult dogs. As HEARTGARD-30 Plus does not control tapeworms, your veterinarian may also advise on the need for treatment of these parasites.

#### HEARTWORM DISEASE IN DOGS

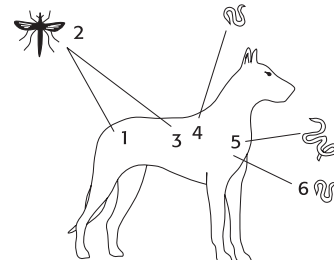
Heartworm disease is debilitating and potentially fatal to dogs. The cause of the disease is a worm that, as an adult, normally lives in the right side of the heart and connecting blood vessels. Adult heartworms are long and slender, often measuring up to 35cm in length.

Adult heartworms can cause inflammation of the walls of the arteries in the lung, obstruct blood vessels and interfere with the blood supply to vital organs. The increased work load on the heart gradually weakens heart muscles which can lead to chronic congestive heart failure. As the disease progresses, an excess of fluid accumulates in the abdominal cavity, lungs and limbs. If the disease is left untreated, death may result.

Most dog owners don't realise their pet has a problem until the disease is well advanced. It is only in the later stages when the disease is difficult to treat, that animals manifest the typical signs of advanced heartworm disease – a chronic cough, laboured breathing, listlessness, fatigue, loss of condition and a distended abdomen caused by the accumulation of fluid.

#### Life cycle of canine heartworm.

1. Mosquito takes in larvae while sucking blood from an infected dog.
2. Larvae develop inside the mosquito for two to three weeks.
3. Mosquito feeds on a dog and deposits infective larvae on the skin.
4. Infective larvae enter the mosquito bite wound on the dog's skin. After a period of development in the tissues, the larvae begin migration to the heart. This entire process takes from two to four months.
5. Upon reaching the heart, the young heartworms develop into mature adults within another two months. Mature adults may live in the heart and connecting blood vessels for up to eight years.
6. Adult female heartworms release larvae into the blood stream.



Heartworm disease can be treated, but successful therapy depends on early detection, prompt treatment and close veterinary supervision. In the final analysis, the best way to control heartworm disease is to prevent it.

#### FOR YOUR CONVENIENCE

Treatment with HEARTGARD-30 Plus can protect your dog against canine heartworm disease and control roundworms and hookworms only if you follow the monthly dosing schedule. This package contains an easy reminder system. Once you have worked out a schedule with your veterinarian, simply peel off the hearts on the blister card, and stick a heart on each of the appropriate dates on a calendar.

#### PACKAGE INFORMATION

HEARTGARD-30 Plus is available in three dosage strengths (see Dosage section) for dogs of different weights.

#### SAFETY DIRECTIONS

Poisonous if swallowed. Will irritate eyes. Avoid contact with eyes. Wash hands after use.

#### FIRST AID

If poisoning occurs contact a doctor or Poisons Information Centre phone Australia 131126.

#### ADDITIONAL USER SAFETY INFORMATION

Additional information is in the Safety Data Sheet.

#### DISPOSAL

Dispose of empty pack by wrapping in paper and placing in garbage.

#### STORAGE

Store below 30°C (Room Temperature). Do not freeze. Protect from light.

Boehringer Ingelheim Animal Health Australia Pty Ltd  
Level 1, 78 Waterloo Road  
North Ryde NSW 2113



For more information, contact Boehringer Ingelheim Customer Solutions on 1800 808 691.

APVMA Approval Numbers: 39541/100433  
39540/100436  
39539/100435

® HEARTGARD<sup>30</sup> is a registered trademark of the Boehringer Ingelheim Group.

7550-1234-07

P18199